



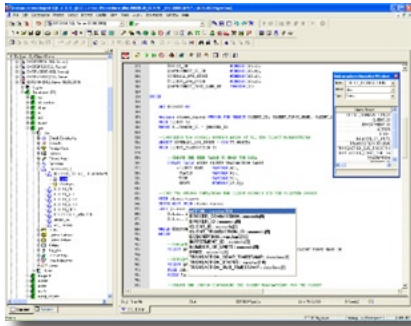
# Rapid SQL® vs Quest Toad

Development cycles are accelerating and developers are finding themselves under the gun to produce high-quality, high-performance SQL code in less time and work across multiple DBMS environments.

## OVERVIEW

Both Embarcadero Rapid SQL and Quest Toad offer developers the ability to code, edit, and optimize SQL, but only Embarcadero offers these functions in a true cross-platform environment.

The Integrated Development Environment (IDE) in Rapid SQL is a SQL IDE that enables developers to create, edit, version, tune, and deploy server-side objects residing on IBM® DB2®, Microsoft® SQL Server, MySQL®, Oracle®, and Sybase® databases. Database developers can work in one standard interface to develop – even on platforms they are not familiar with. For cross-platform schema development, Rapid SQL's standardized, multi-tabbed, graphical object editors for each database object type allow you to move effortlessly from managing a SQL Server or Sybase schema to managing an Oracle schema, and vice-versa. The tool contains full knowledge of the underlying DBMS system catalog, syntax, and alteration rules. Only Embarcadero offers a database development tool that lets you work seamlessly across RDBMS platforms.



*Rapid SQL integrates floating describe windows and column lookups to assist the developer to create high-performing SQL*

## CASE STUDY

The Business Information Systems Group at Los Alamos National Laboratory faced a daunting challenge – immediate migration of the department's Sybase and UDB databases to an Oracle AIX environment. When the project started, the team was faced with converting the Sybase stored procedures manually, and then migrating them via Oracle's migration tool. Not only did the process take more than six months, the resulting code still had to be debugged and tweaked. It was clear that the process was badly in need of automation tools, which Los Alamos National Laboratory found in Embarcadero Rapid SQL.

With Rapid SQL, it is now standard to first convert procedures with the Oracle migration tool, and then bring the resulting output file into Rapid SQL to create the Oracle procedure, function, or package. In many cases, the procedure has errors that are easily fixed with Rapid SQL's syntax checker and error reporting facility.

Feature	Rapid SQL Professional	Toad for Oracle
Wizard driven creation process for all objects	X	
Common Editors for all Objects across all DBMS platforms (Toad has separate browsers/editors for many objects)	X	
Cross-platform DBMS support from a single interface	X	
Oracle-only data migration		X
SQL Logging	X	X
PL/SQL Code Formatting	X	X
PL/SQL Code Formatting Configuration	X	X
Configurable auto-replacement of characters	X	X
User-defined code templates	X	X
Execute database commands against a select grouping of objects (drop, compile, analyze, etc., against a grouping of objects)	X	X
Schedule any command from SQL window	X	
SQL command recall	X	X
Extract DDL directly into SQL editor	X	X
PL/SQL code syntax check	X	X
Integrate with SCC-compliant version control	X	X
Code generation facility	X	
Paste SQL code	X	
Extract table data into Insert statements	X	X
Live data editing	X	X
Visual Query Builder (Quest Query Builder)	X	X
View query performance statistics	X	
PL/SQL Debugger and Profiler	X	X
Files search utility	X	X
Database text search	X	
Database object search	X	X

The team is now able to convert, debug, and complete most stored procedures in minutes, rather than hours or days; a process that originally took six months now takes only two. With Rapid SQL, cross-platform migration time-to-completion has been cut 70 percent.

All this work was conducted from a single application and a single interface: Rapid SQL. If this group purchased Quest Toad, they would need Toad for Oracle, Toad for DB2, and Toad for Sybase, which Quest does not offer.

Download a Free Trial at [www.embarcadero.com](http://www.embarcadero.com)

Corporate Headquarters | Embarcadero Technologies | 100 California Street, 12th Floor | San Francisco, CA 94111 | [www.embarcadero.com](http://www.embarcadero.com) | [sales@embarcadero.com](mailto:sales@embarcadero.com)